

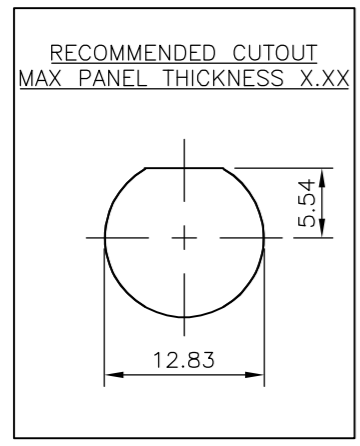
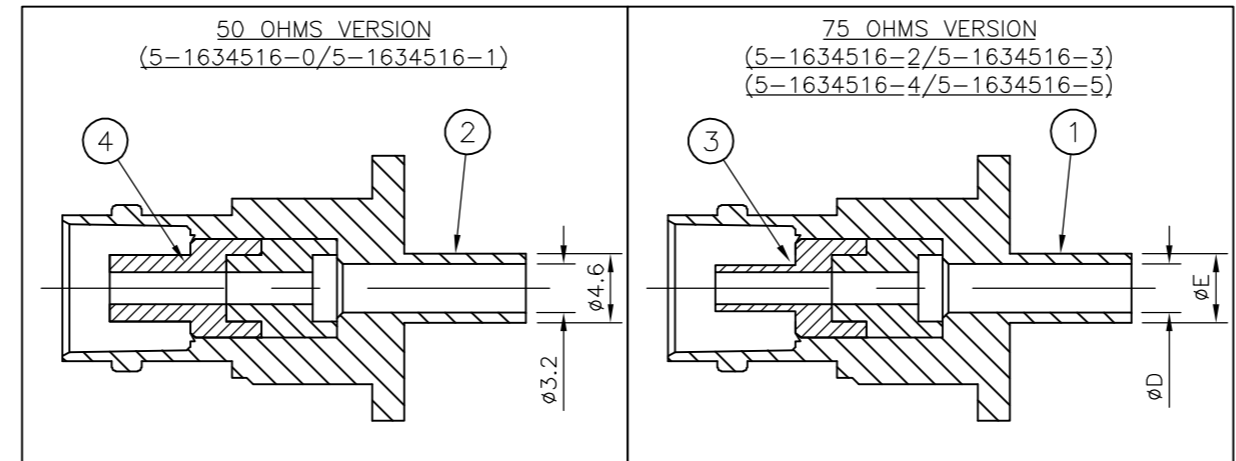
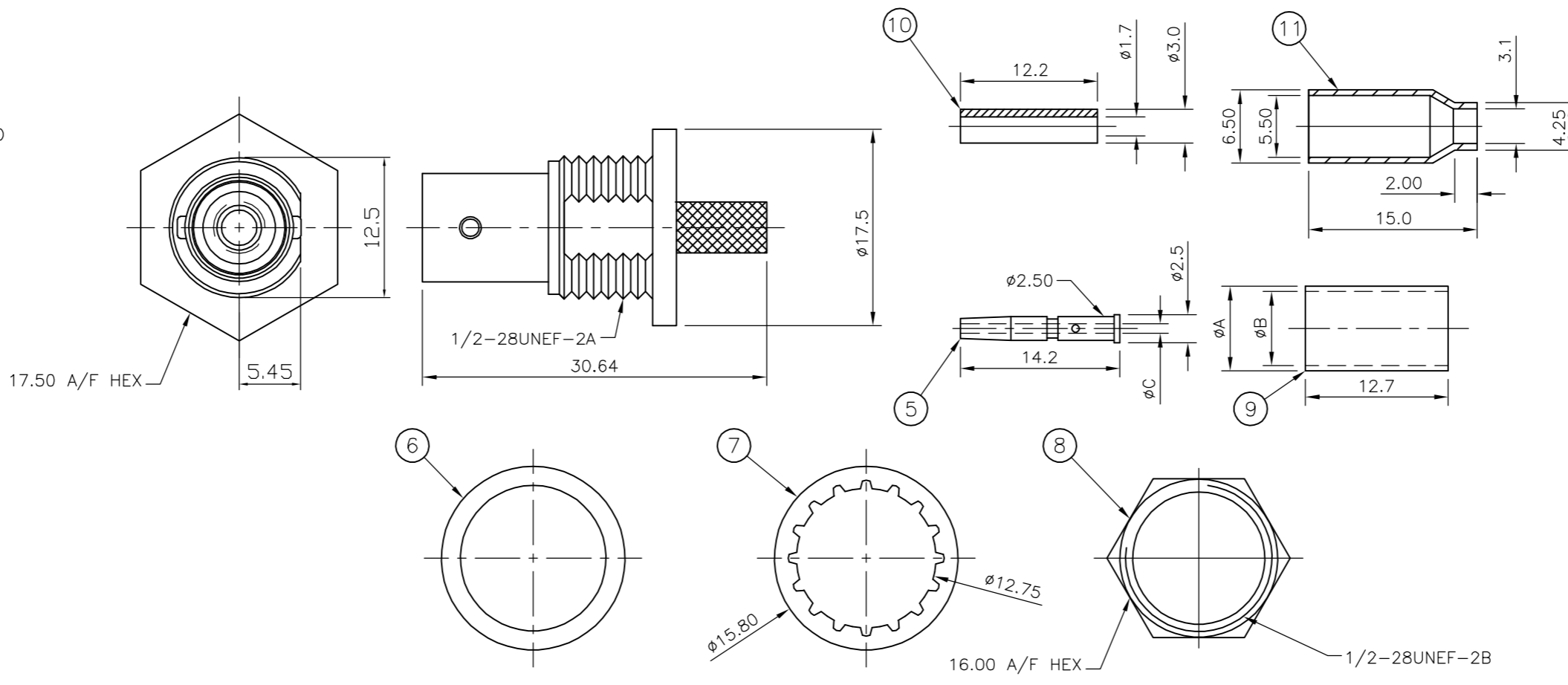
THIS DRAWING IS UNPUBLISHED. RELEASED FOR PUBLICATION JULY, 2005.
 © COPYRIGHT 2005 BY TYCO ELECTRONICS CORPORATION. ALL RIGHTS RESERVED.

| Loc | DIST | REVISIONS | | | | | | |
|------|------|-----------|------|-------------|---------|-------------|---|-------------|
| | | P | LTR | DESCRIPTION | DATE | DWN | APVD | |
| E | B | A | | FIRST ISSUE | 22JUL05 | JMS | FWK | |
| 6.50 | 5.45 | 3.80 | 0.85 | 6.60 | 7.52 | 9-1478242-0 | RG59B/U, 62A/U, 140/U, 210/U, URM90, KX 6A, KX 25, KX 52, KX 53 | 5-1634516-5 |
| 6.50 | 5.45 | 3.80 | 0.85 | 6.60 | 7.52 | 9-1478242-0 | RG59B/U, 62A/U, 140/U, 210/U, URM90, KX 6A, KX 25, KX 52, KX 53 | 5-1634516-4 |
| 5.60 | 4.60 | 3.20 | 0.40 | - | - | 9-1478242-0 | RG179B/U, 187A/U, URM111 | 5-1634516-3 |
| 5.60 | 4.60 | 3.20 | 0.40 | - | - | 9-1478242-0 | RG179B/U, 187A/U, URM111 | 5-1634516-2 |
| 5.60 | - | - | 1.10 | 5.40 | 6.40 | 9-1478242-0 | RG58C/U, 141A/U, URM43, 76, BELDEN 9907, KX 15 | 5-1634516-1 |
| 5.60 | - | - | 1.10 | 5.40 | 6.40 | 9-1478242-0 | RG58C/U, 141A/U, URM43, 76, BELDEN 9907, KX 15 | 5-1634516-0 |
| F | E | D | C | B | A | DIE SET | CABLE GROUPS | PART NO. |

- NOTES**
- 1. 100 TRAY PACK IN ACCORDANCE WITH AMP SPEC 107-3275
 - 2. SINGLE PACK IN ACCORDANCE WITH AMP SPEC 107-3275
 - 3. Au PLATING OVER Ni PLATING OVER Cu PLATING
 - 4. Ni PLATING OVER Cu PLATING
 - 5. HAND TOOL: 9-1478240-0
 - 6. DIE SET: SEE TABLE
 - 9. ELECTRICAL CHARACTERISTICS

| | |
|-------------------------------|------------|
| FREQUENCY RANGE (50 OHMS): | DC - 4GHz |
| FREQUENCY RANGE (75 OHMS): | DC - 2GHz |
| INSULATION RESISTANCE: | 5000 MOHMS |
| WORKING VOLTAGE: | 500V |
| DIELECTRIC WITHSTAND VOLTAGE: | 1500V RMS |
| CONTACT RESISTANCE: | 3.0 mOHMS |
 - 10. MECHANICAL CHARACTERISTICS

| | |
|-------------------|----------------|
| DURABILITY: | 50 CYCLES MIN |
| TEMPERATURE RATE: | -55°C TO +85°C |
 - 11. FOR TECHNICAL DATA REFER TO YOUR LOCAL TYCO ELECTRONICS SALES OFFICE
 - 12. ALL DIMENSIONS ARE NOMINAL FOR REFERENCE ONLY UNLESS OTHERWISE STATED



| QTY | DESCRIPTION | ITEM |
|------|-------------------|------------------|
| - | BRASS | FERRULE 11 |
| - | NYLON | PUSHER SLEEVE 10 |
| 1 | BRASS | FERRULE 9 |
| 1 | BRASS | HEX NUT 8 |
| 1 | PHOS BRONZE | LOCK WASHER 7 |
| 1 | RUBBER | GASKET 6 |
| 1 | BRASS | CONTACT 5 |
| - | POLYMETHYLPENTENE | INSULATOR 4 |
| 1 | POLYMETHYLPENTENE | INSULATOR 3 |
| - | ZINC ALLOY | BODY 2 |
| 1 | ZINC ALLOY | BODY 1 |
| 5--5 | MATERIAL | DESCRIPTION |
| 5--4 | | |
| 5--3 | | |
| 5--2 | | |
| 5--1 | | |
| 5--0 | | |

THIS DRAWING IS A CONTROLLED DOCUMENT.

| | | |
|------------------|----------------|---------|
| DWN | J.SANDWELL | 22JUL05 |
| CHK | S.PARLOW | 22JUL05 |
| APVD | F.WHEELER-KING | 22JUL05 |
| PRODUCT SPEC | 108-3435 | |
| APPLICATION SPEC | SEE PAGE 2 | |
| WEIGHT | - | |
| CUSTOMER DRAWING | | |

tyco Tyco Electronics Corporation
Bideford, UK, EX39 4HE

Electronics

NAME: BNC BULKHEAD JACK REAR MOUNT CRIMP

SIZE: A2 CAGE CODE: 00779 DRAWING NO: C=1634516 RESTRICTED TO: -

SCALE: NTS SHEET 1 OF 2 REV A

THIS DRAWING IS UNPUBLISHED. RELEASED FOR PUBLICATION JULY, 2005.
 © COPYRIGHT 2005 BY TYCO ELECTRONICS CORPORATION. ALL RIGHTS RESERVED.

| LOC | | DIST | | REVISIONS | | | |
|-----|-----|-------------|------|-----------|------|--|--|
| P | LTR | DESCRIPTION | DATE | DWN | APVD | | |
| | | SEE SHEET 1 | | | | | |

COMPONENTS

| HEX NUT (ITEM 8) | LOCK WASHER (ITEM 7) | GASKET (ITEM 6) | MAIN BODY (ITEM 1,2,3, & 4) | CENTRE CONTACT (ITEM 5) | PUSHER SLEEVE (ITEM 10) | CRIMP FERRULES (ITEM 9 & 11) |
|---------------------|-------------------------|--------------------|--------------------------------|----------------------------|----------------------------|---------------------------------|
| | | | | | | |

ASSEMBLY INSTRUCTION

| CABLES: RG59B/U, 62A/U, 140/U, 210/U, URM90, KX 6A, KX 25, KX 52, KX 53, RG58C/U, 141A/U, URM43, 76, BELDEN 9907, KX 15 | CABLES: RG179B/U, 187A/U, URM111 |
|---|---|
| <p>STEP 1</p> <p>1. SLIDE METAL CRIMP FERRULE OVER CABLE</p> | <p>STEP 1</p> <p>1. SLIDE METAL CRIMP FERRULE OVER CABLE</p> |
| <p>STEP 2</p> <p>1. STRIP CABLE TO DIMENSIONS AS SHOWN</p> | <p>STEP 2</p> <p>1. STRIP CABLE TO DIMENSIONS AS SHOWN</p> |
| <p>STEP 3</p> <p>1. FIT CONTACT OVER CENTRE CONDUCTOR TO BUTT AGAINST DIELECTRIC. 2. CRIMP USING TOOL AS NOTES ON PAGE 1.</p> <p>RECOMMENDED CENTRE CONTACT A/F HEX</p> | <p>STEP 3</p> <p>1. SLIDE ITEM 10 PUSHER SLEEVE OVER DIELECTRIC BEFORE FITTING THE CONTACT. 2. FIT CONTACT OVER CENTRE CONDUCTOR TO BUTT AGAINST DIELECTRIC. 3. CRIMP USING TOOL AS NOTES ON PAGE 1.</p> <p>RECOMMENDED CENTRE CONTACT A/F HEX</p> |
| <p>STEP 4</p> <p>1. PRESS SUB-ASSEMBLY INTO BODY, UNTIL CONTACT IS FULLY LOCATED BY AN AUDIBLE CLICK. 2. ENSURE THAT KNURLED HOUSING INSERTS BETWEEN THE DIELECTRIC AND CABLE BRAID.</p> | <p>STEP 4</p> <p>1. PRESS SUB-ASSEMBLY INTO BODY, UNTIL CONTACT IS FULLY LOCATED BY AN AUDIBLE CLICK. 2. ENSURE THAT KNURLED HOUSING INSERTS BETWEEN THE PUSHER SLEEVE AND CABLE BRAID.</p> |
| <p>STEP 5</p> <p>1. SLIDE CRIMP FERRULE ALONG THE CABLE UNTIL IT BUTTS AGAINST THE HOUSING BODY. 2. CRIMP USING TOOL AS NOTED ON PAGE 1. 3. CRIMP DIMENSION X IS:- RG59B (SEE PAGE 1 FOR FULL CABLE LIST) = 6.50 RG58C/U (SEE PAGE 1 FOR FULL CABLE LIST) = 5.60</p> <p>RECOMMENDED CRIMP SLEEVE A/F HEX</p> | <p>STEP 5</p> <p>1. SLIDE CRIMP FERRULE ALONG THE CABLE UNTIL IT BUTTS AGAINST THE BODY HOUSING. 2. CRIMP USING TOOL AS NOTED ON PAGE 1. 3. CRIMP DIMENSION AS SHOWN.</p> <p>RECOMMENDED CRIMP SLEEVE A/F HEX</p> |

| | | | | | |
|--|--|------------------------------|----------------------------|--|--|
| THIS DRAWING IS A CONTROLLED DOCUMENT. | | DWN J.SANDWELL 22JUL05 | tyco Electronics | Tyco Electronics Corporation Bideford, UK, EX39 4HE | |
| DIMENSIONS: mm | | CHK S.PARLOW 22JUL05 | | NAME BNC BULKHEAD JACK REAR MOUNT CRIMP | |
| TOLERANCES UNLESS OTHERWISE SPECIFIED | | APVD F.WHEELER-KING 22JUL05 | PRODUCT SPEC 108-3435 | | |
| 0 PLC ± | | APPLICATION SPEC SEE PAGE 2 | | | |
| 1 PLC ± | | WEIGHT - | | | |
| 2 PLC ± | | SIZE A2 | | | |
| 3 PLC ± | | CAGE CODE 00779 | | | |
| 4 PLC ± | | DRAWING NO C=1634516 | | | |
| ANGLES ± | | RESTRICTED TO - | | | |
| FINISH - | | SCALE NTS SHEET 2 OF 2 REV A | | | |
| MATERIAL SEE TABLE | | CUSTOMER DRAWING | | | |

1634516

A